



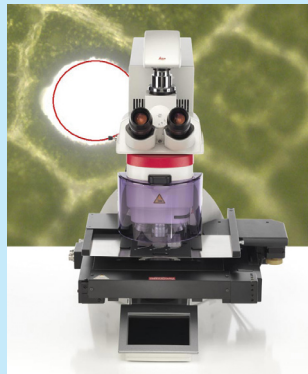
TRANSLATIONAL RESEARCH PLATFORM IN ONCOLOGY LYON SUD UNIVERSITY HOSPITAL

Expertise

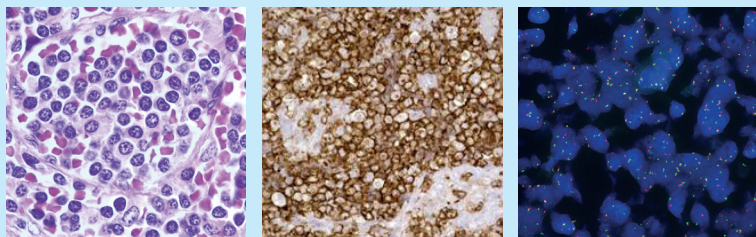
- Embedding of human, mice tissues, cell pellet
- Paraffin and frozen sections
- Classical staining
- Special staining
- Immunohistochemistry (IHC)
- Immunofluorescence (IF)
- Tissue microarray (TMA)
- Micro/macrodissection
- FISH analysis
- Slide scanning
- Specialized pathologist analyses
- Consultation collaboration
- Biological resources center

Instrumentation

- Leica ASP300 automatic tissue processor
- Modular tissue embedding center MEDITE
- Microtomes (Leica, Microm, Shandon)
- Special Stains slide processing NexEs Ventana Roche
- Tissue microarrayer Alphelys
- Sakura autostainer with robotic coverslip
- Automated immunohistochemistry processing system Roche Ventana Benchmark ultra and Bond 3 Leica research
- Laser microdissection Leica LMD6
- Nanostring nCounter Flex platform



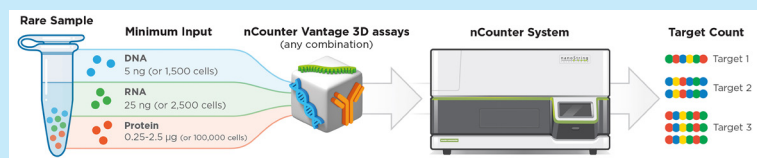
The **Translational Research Platform in Oncology (PRTO)** provides clinicians and researchers with access to **cutting edge technologies in pathology and molecular oncology** to help them enter their projects into clinical trials.



The Translational Research Platform in Oncology is dedicated to **human sample analyses** (FFPE tumor biopsies, circulating tumor DNA/cells, etc). The platform is supervised **by expert pathologists and biologists** from the pathology and genomics facilities of the Lyon Sud University Hospital.



Services provided by the PRTO include **multi-omics analysis** through 3D biology approach on a **Nanostring nCounter** platform, enrichment of rare tumor cells using **laser microdissection** or **multi-immunohistochemistry** on dedicated cutting edge automated equipment.



We also have access to a large collection of samples from various cancers through our certified tumor biobank, available for researchers and clinicians.





Access details

- Basic science projects
- Translational projects
- Preclinical projects
- Human samples

Specialization

- Melanoma
- Lymphoma
- Ovarian tumors
- Urological tumors
- Head and Neck tumors

D.I.Y.?

No Free access to platform equipment.

Mention us in your publications!

To allow our platform to pursue its objectives, we need you to mention our work in your publications as follows:

Plateforme de Recherche de Transfert en Oncologie des Hospices Civils de Lyon, Centre de Biologie Sud, Lyon, France. Fondation Synergie Lyon Cancer, Lyon, France.

Contacts

GROUPEMENT HOSPITALIER SUD

Centre Hospitalier Lyon Sud
Centre de Biologie Sud
165, Chemin du Grand Revoyet
F-69495 Pierre-Bénite cedex

ghs.tumorothèque@chu-lyon.fr

alexandra.traverse-glehen@chu-lyon.fr

Tel. +33 (0)4 78 86 11 89

Project workflow



Alexandra Traverse-Glehen

– Scientific director

Alexandra Traverse-Glehen is a MD-PhD. As a pathologist, she is specialized in hematopathology and she is the coordinator of the regional Lymphopath Network. Since 2013, she is the leader of the Cancer Biological Resources Centre of the Hospices civils de Lyon.

Co-coordinators

Pr Germain Gillet – Biochemistry

Dr Jonathan Lopez – Molecular Biology

Dr Pierre Sujobert – Hematology

Pr Mojgan Devouassoux-Shisheboran – Pathology

Submission form and more infos:

www.cancer-research-lyon.com